

# Commander Phone W56P Quick Installation Guide

## PACKAGING CONTENTS

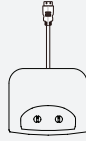
The following items are included in your W56P package:



Handset



Base Station



USB Charger  
Cradle



Two Power  
Adapters



Belt  
Clip



Ethernet  
Cable



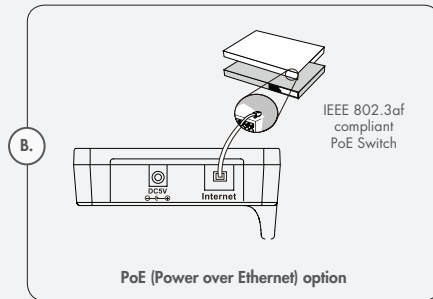
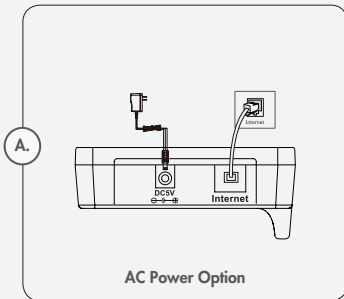
Rechargeable  
Battery



Quick Installation  
Guide & Quick  
Reference Guide

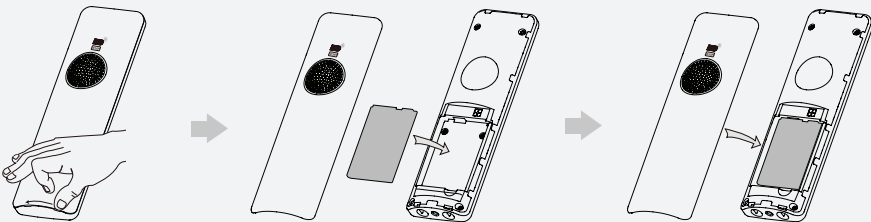
## ASSEMBLING THE BASE AND PHONE

1. Connect the network and power for the base station in one of the following ways, as shown below:



**Note:** If inline power (PoE) is provided, you do not need to connect the power adapter. Make sure the switch is PoE-compliant. If using the power adapter, the base station should be used with an original power adapter only. The use of a third-party power adapter may cause the damage to the base station.

2. Insert the battery into the handset, as shown below:

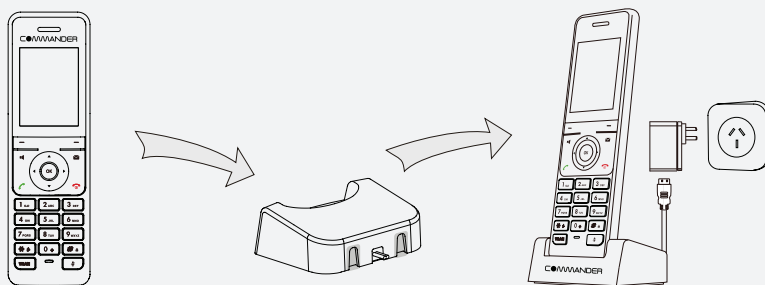


**Note:** The handset in this package is already registered to the base station. Should you have any requirement to re-register the W56H handset with the base, please see the W56H Quick Installation Guide.

# Commander Phone W56P Quick Installation Guide

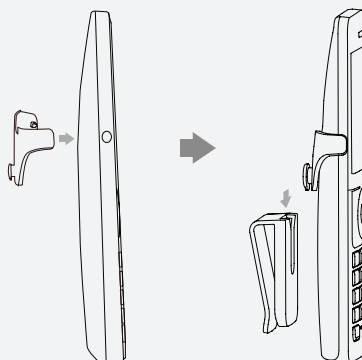
## ASSEMBLING THE BASE AND PHONE (CONT.)

3. Connect the charger cradle and charge the handset, as shown below:



**Note:** The handset should be used with an original power adapter only. The use of a third-party power adapter may cause the damage to the handset. The charging status of the handset is indicated in the top right-hand corner of the LCD screen.

5. Attach the Belt Clip, as shown below if required:



## SETUP

After the IP phone is connected to the network and supplied with power, it automatically begins with the initialisation process.

Please allow up to 10-15 minutes for the phone to connect to Commander's servers to collect their configuration and any required updates to both the base station and handset/s.

The phone may reboot two or three times during this process or after factory default setting is made. **DO NOT** interrupt this process. The display may indicate the current status of the operation with 'initialising' and 'configuration updating'. After startup, the phone is ready for use.